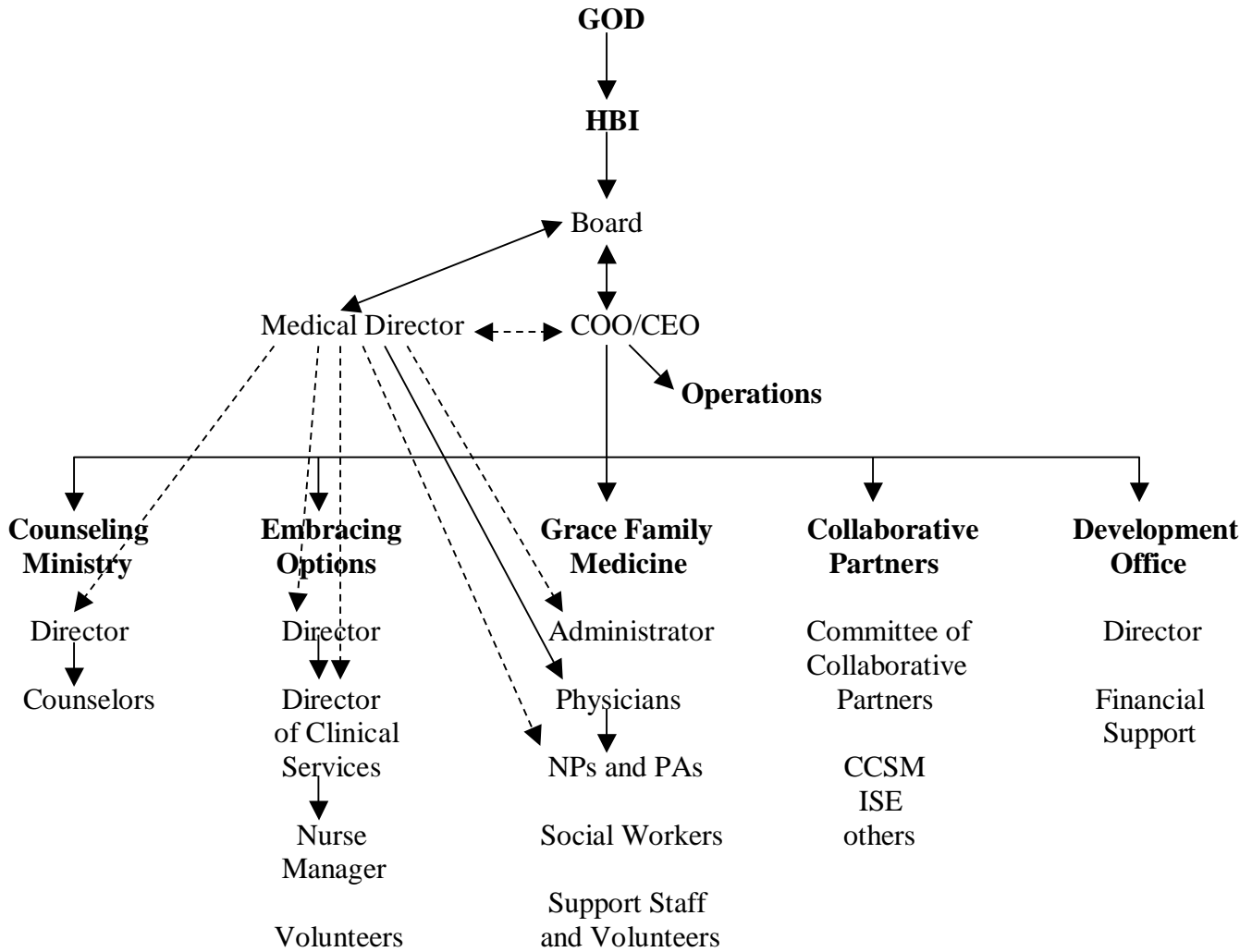


## Proposed His Branches Organizational Chart



Currently only the central 3 components are in place and undergoing transition and growth, with the Counseling Ministry and Development Office yet to be established. Until chart is fully functional, Board operates as a Managing Board on its way to becoming a Governing Board.

The Program Committee of the Board reviews and evaluates all programs periodically. The Executive Committee and Board as a whole take responsibility for HBI’s primary program, Grace Family Medicine, receiving reports from and providing oversight and direction to its Medical Director and CEO/COO. The Development/PR Committee supports the Development Office. Finance and Personnel Committees work with the CEO/COO in providing policy and guidelines for Operations. In addition, dedicated Advisory Boards, which serve as subcommittees of the Board and report through a designated Member, support the Directors of the Counseling Ministry and Embracing Options.

Medical Director exercises primary oversight for 3 clinical programs to the left while CEO/COO shares administrative oversight and exercises primary oversight for 2 community relationships on the right. Medical Director and CEO/COO work as a mutually submitted team.

Counseling Ministry may take a form similar to that outlined in “Prepared Parenthood” concept paper.